

# What are Migrant and Community Health Centers?

Migrant and Community Health Centers are medical clinics that provide basic health services to people in their community.

Migrant Health Centers mainly serve farmworkers and their families.

## What services are offered?

- Medical check-ups
- Medical treatment
- Vaccinations
- Dental care
- Pre-natal care
- Mental health services

## How much does it cost?

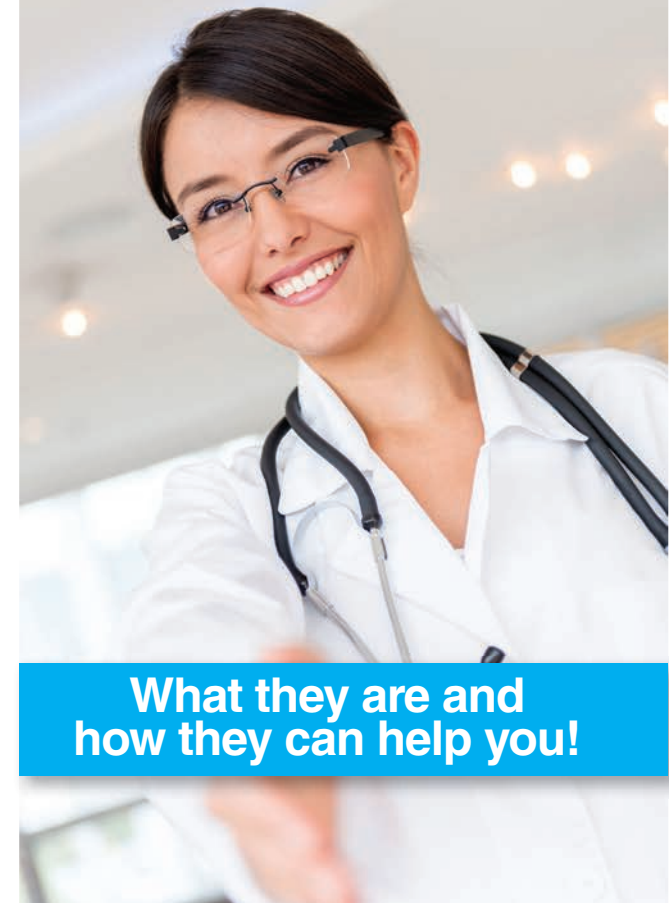
Migrant and Community Health Centers accept most forms of insurance, including Medicaid and CHIP. They also accept people without medical insurance.

All of these centers have a “sliding-scale fee” where the price you pay depends on your income. In order to qualify for the sliding-scale fee, you need to bring a proof of income to determine your pay rate for services.

This publication is supported by the Health Resources and Services Administration's Bureau of Primary Health Care. The contents of this publication are solely the responsibility of Farmworker Justice and do not necessarily reflect the official views of the Bureau of Primary Health Care or the Health Resources and Services Administration.



# Migrant and Community Health Centers



**What they are and  
how they can help you!**



## Who can go to a Migrant and Community Health Center?

Migrant and Community Health Centers are open to all members of the community. You do not need to be a U.S. citizen or permanent resident to receive their services. Most health centers have staff who speak Spanish. Some have staff that speak indigenous languages or access to indigenous language interpreters.

### **If you need transportation:**

Some centers offer transportation to clinics or have mobile clinics that travel to labor camps.

## Where is the local Migrant and Community Health Center?

To find out where the closest health center is to you or if you would like more health information, you can call:

### **Call for Health**

("Una Voz para la Salud" in Spanish) at 1-800-377-9968. Call for Health is bilingual and is open Monday to Friday from 8:30am to 4:30pm Central time.

### **National Migrant Education Number**

("Número Nacional Para la Educación de los Migrantes" in Spanish) at 1-800-234-8848. Bilingual specialists are able to provide information on important services such as health, nutrition, education and other basic necessities.

### **The Mexican Consulate**

(provides assistance regardless of nationality)

**Online** at <http://bphc.hrsa.gov/>

